

The Community



YOUR STORY STARTS HERE

SBHLV.COM

StoryBook
HOMES



Included Features

Superior Craftsmanship

- Illuminated address numbers
- Coach lights with photocell at garage
- 6'8" insulated, 2-panel entry door
- Insulated garage door with decorative hardware
- Boral® durable concrete roof tile
- Front yard desert landscaping with automatic drip irrigation system
- Rear yard block fencing
- Paver driveways
- Vinyl floor at entry, kitchen, laundry & baths
- Carpet (choice of color) over 3/8" rebond padding
- Flat latex paint on walls and ceilings, including garage
- Semi-gloss paint in kitchen, baths and laundry room
- Privacy door knobs with locks at owner's bedroom and all baths and passage door knobs at all other doors
- Painted wood shelves and rod in closets
- 40-gallon hot water heater by Rheem®
- Soft water loop

Kitchen

- Granite countertops
- GE® gas range oven with electronic ignition
- GE® vented hood, two-speed fan and work surface light
- Built-in GE® dishwasher
- Recessed, flat panel maple cabinets with concealed hinges, knobs and full depth shelves
- 36" upper cabinets
- Double bowl stainless steel sink with Moen® pullout faucet
- Badger® food disposal with 1/3 HP motor
- Icemaker line for refrigerator

Elegant Bedrooms & Spacious Baths

- Cultured marble vanity tops with undermount sinks
- Moen® chrome faucets & drains
- Bath bar light fixture over mirror *per plan
- Chrome finished medicine cabinet in owner's bath
- Dual vanities in owner's bath
- Combination bathtub/shower with Moen® trim
- Elongated toilets in all baths
- Shower rods in baths
- 42" bath mirrors
- Ceiling light fixture in bedrooms

Safety & Quality Assurance

- Smoke and carbon monoxide detectors *per plan
- Post-tension concrete foundation
- New Home Warranty with 10-Point Home Assurance Program

Electrical & Convenience Features

- 200 amp panel
- Decora® rocker light switches
- USB outlet in kitchen and owner's bedroom
- Ceiling fan block and pre-wire with double switch in great room and owner's bedroom
- Garage door opener pre-wire
- Recessed can lights *per plan
- Fluorescent light in garage and owner's closet
- Cable pre-wire at great room and owner's bedroom

Energy Savings

- Vinyl frame windows and sliding glass doors with dual panel Low-E glass
- 14 SEER rated HVAC system
- Engineered HVAC system with Honeywell® programmable thermostat
- R-13 wall insulation, R-38 attic insulation and insulation above garage
- Radiant heat barrier roof sheathing

Optional Features

- Walk-in shower in lieu of bathtub/shower at owner's bath
- Kitchen island *per plan
- Additional pre-wires for tv
- Garage door opener system
- Covered patio with pavers
- 9' first floor ceilings
- Quartz kitchen countertops
- Upgraded bath fixtures
- Stainless steel appliances
- Over the range microwave
- Upgraded flooring
- Pendant light pre-wire

YOUR STORY STARTS HERE

SBHLV.COM

StoryBook
HOMES

This information is preliminary and subject to change. In order to continuously improve our homes, we reserve the right to alter, relocate, modify, or eliminate any features, floor plans, specifications, or materials, all without notice or obligation to purchaser. Seller may offer a floor plan in this community that is not currently modeled. However, a model of the floor plan may exist at another of Seller's communities and a Buyer may be directed to that community. Buyer understands and accepts that the features for the floor plan are NOT the same in each community. Buyer understands that standard features, architectural features, and/or optional upgraded features may change substantially at any time, with or without notice from Seller or Seller's Salesperson. Lic # B.0019440.LLC

As of 12.17.20



Sherwood Crossing

PRELIMINARY

The Archer

3 BEDS | 2.5 BATHS | 1,430 SQ FT



Elevation A



Elevation B

SBHLV.COM | SALES@SBHLV.COM | 702-216-0007

StoryBook
HOMES

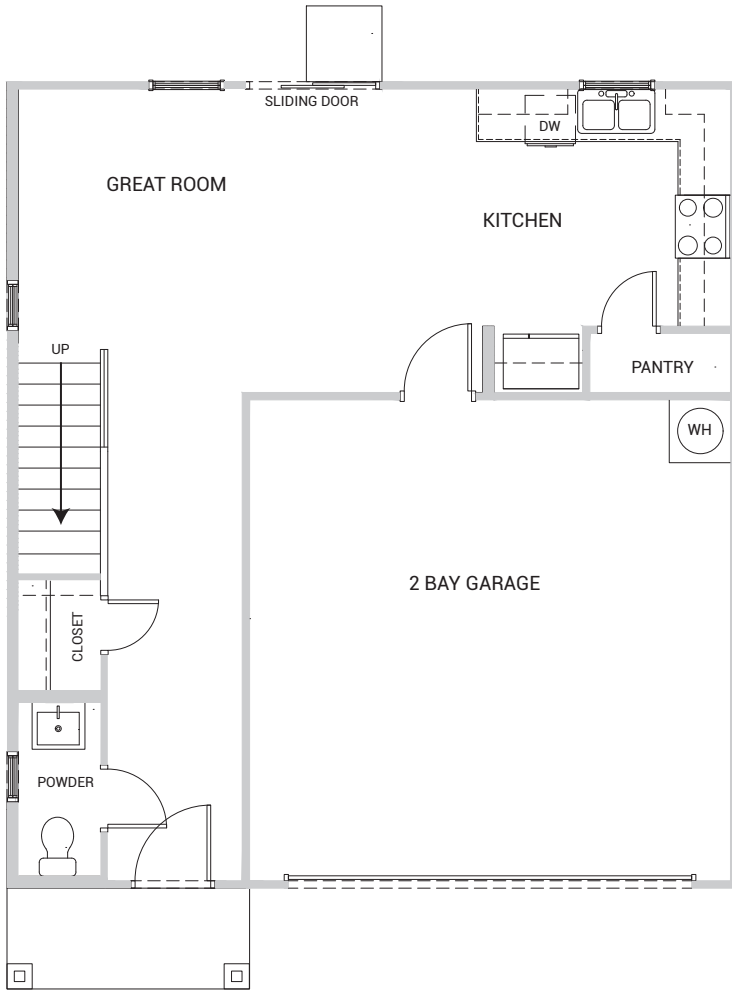
As of 1.4.21

Plans, products, prices, maps and designs may change without notice. Floor Plans and Elevations may vary substantially from those shown. Lic # B.0019440.LLC

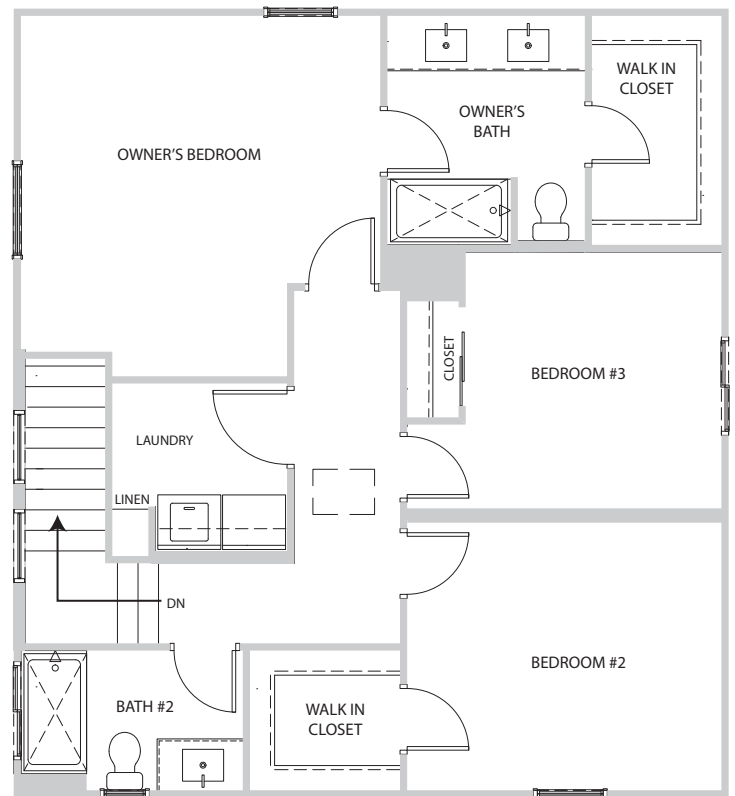
The Archer

3 BEDS | 2.5 BATHS | 1,430 SQ FT

FIRST FLOOR



SECOND FLOOR



YOUR STORY STARTS HERE



Sherwood Crossing

PRELIMINARY

The Forrester

3 BEDS | 2.5 BATHS | 1,468 SQ FT



Elevation A



Elevation B

SBHLV.COM | SALES@SBHLV.COM | 702-216-0007

StoryBook
HOMES

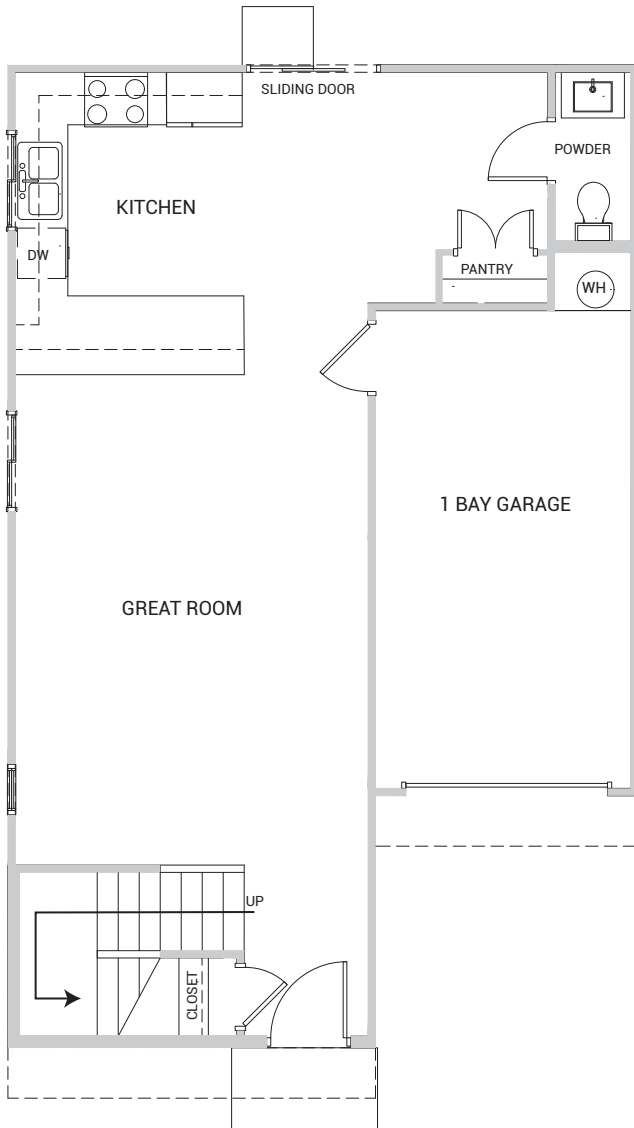
As of 1.4.21

Plans, products, prices, maps and designs may change without notice. Floor Plans and Elevations may vary substantially from those shown. Lic # B.0019440.LLC

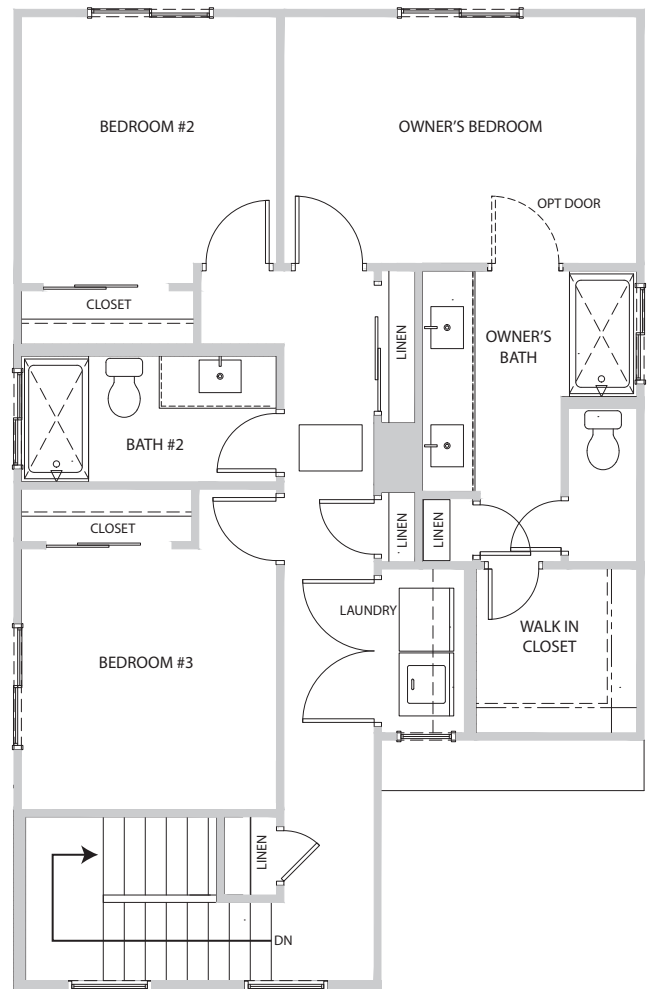
The Forrester

3 BEDS | 2.5 BATHS | 1,468 SQ FT

FIRST FLOOR



SECOND FLOOR



YOUR STORY STARTS HERE



The Nottingham

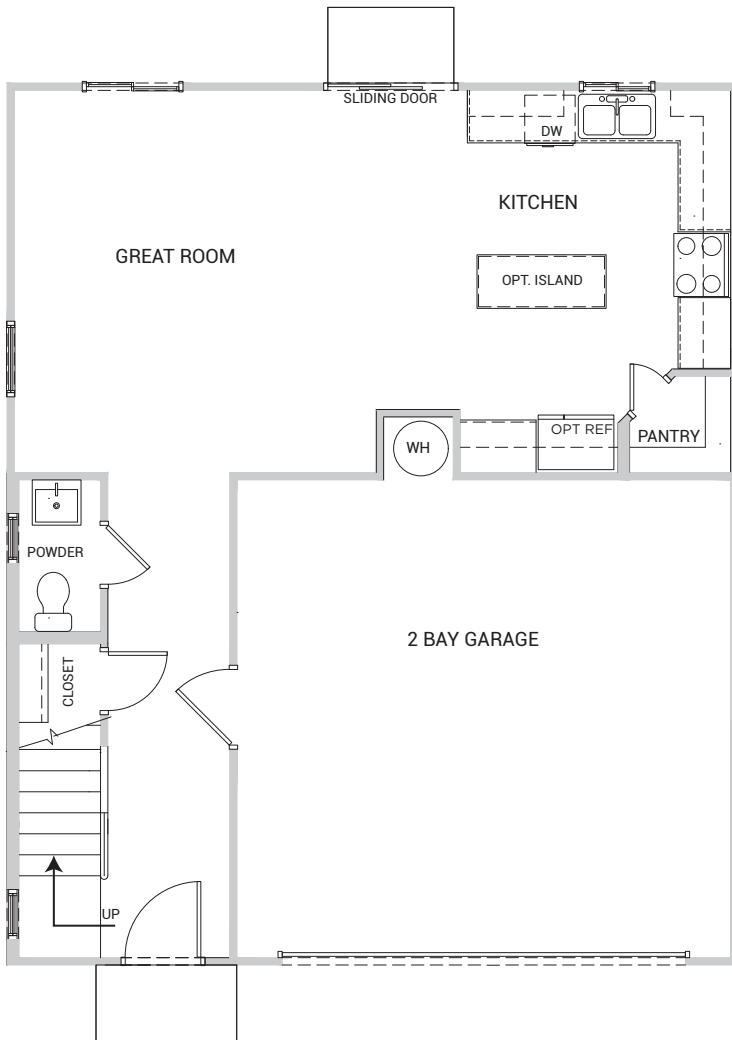
4 BEDS | 2.5 BATHS | 1,599 SQ FT



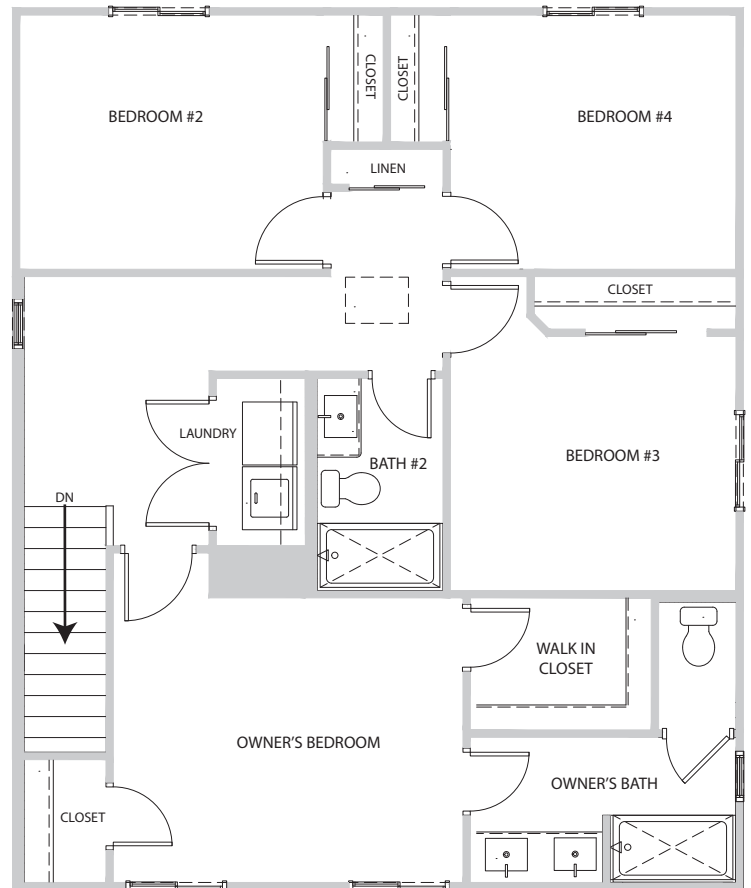
The Nottingham

4 BEDS | 2.5 BATHS | 1,599 SQ FT

FIRST FLOOR



SECOND FLOOR



YOUR STORY STARTS HERE



Sherwood Crossing

PRELIMINARY

The Yorkshire

3 BEDS | 2.5 BATHS | 1,645 SQ FT



SBHLV.COM | SALES@SBHLV.COM | 702-216-0007

StoryBook
HOMES

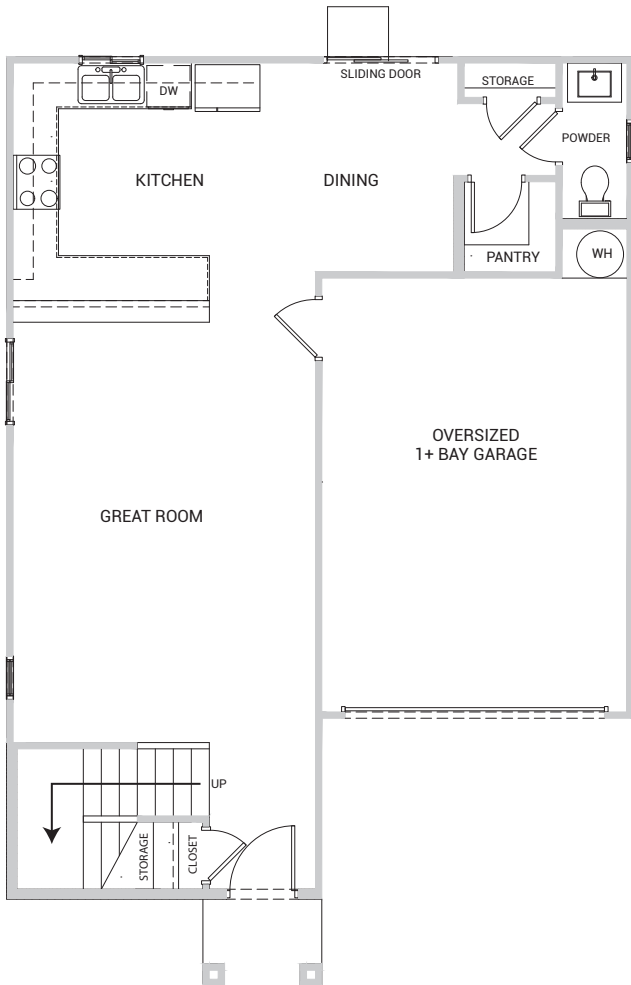
As of 1.4.21

Plans, products, prices, maps and designs may change without notice. Floor Plans and Elevations may vary substantially from those shown. Lic # B.0019440.LLC

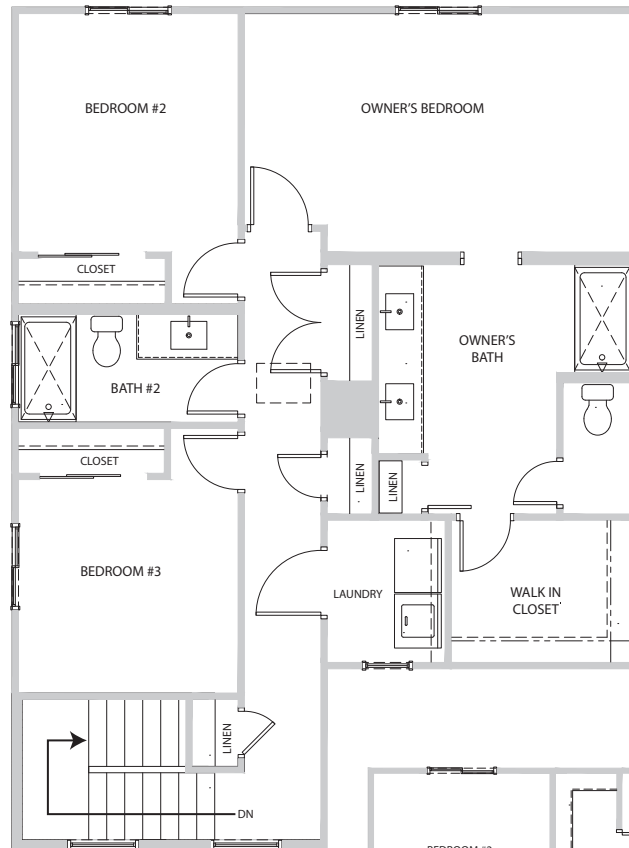
The Yorkshire

3 BEDS | 2.5 BATHS | 1,645 SQ FT

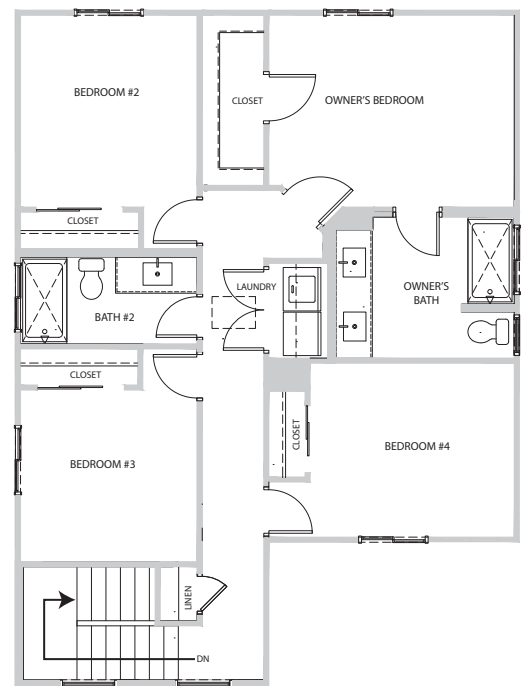
FIRST FLOOR



SECOND FLOOR



SECOND FLOOR OPTIONAL BEDROOM #4



YOUR STORY STARTS HERE

